

Food Additives Panel

At Home

Blood

DBS

Key Clinical Messages

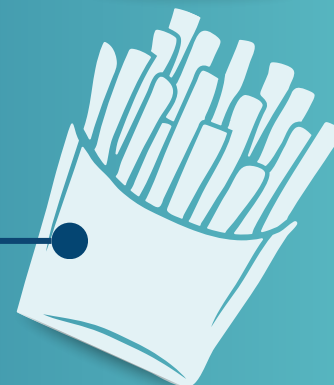


ADDITIVES

Lecithin (Soy)
Polysorbate 80

ADDITIVES

Xanthan Gum



What is the Food Additives Panel?

The Food Additives Panel utilizes microarray technology to detect IgG and IgA immune responses to 57 common food additives, including preservatives, artificial sweeteners, emulsifiers, food dyes, and pesticides. This method ensures high specificity and sensitivity.

- Detects IgG and IgA immune responses to common food additives, such as artificial sweeteners, dyes, emulsifiers, and preservatives, helping identify hidden dietary triggers of inflammation and digestive distress.
- Provides a complete assessment of immune reactions to food preservatives and additives.

The Food Additives Panel is backed by clinical validation, ensuring reliable results that support optimal health and wellness management.

13 Emulsifiers, Stabilizers & Thickening Agents

28 Colorants, Sweeteners & Flavor Enhancers

16 Preservatives, Pesticides & Chemical Agents



Who Benefits from This Panel?

The Food Additives Panel is a helpful option for patients dealing with frequent bloating, diarrhea, IBS, or unexplained symptoms like headaches, brain fog, and chronic fatigue. It's especially useful for those with a history of food sensitivities, persistent skin issues like eczema, joint pain, or respiratory problems such as asthma. If a patient is also experiencing cognitive changes or neurological symptoms without a clear cause, this test can help identify hidden food additive triggers.



[Download Sample Report](#)

Gums and Thickening Agents

Guar Gum

IgA 3.6
IgG 12.5

Food Dyes and Pigments

Acid Red #14 (Carmoisine)

IgA 7.3
IgG 22.8



Synergistic Testing Options

- **Food Sensitivity Complete:** Tests for IgG- and IgA-mediated immune responses to over 100 foods, helping identify sensitivities to additives, artificial ingredients, and other foods that could be causing inflammation and digestive discomfort.
- **Gut Zoomer:** Helps assess microbial imbalances in the gut, which can be influenced by food additives. Imbalances can contribute to gut permeability (leaky gut) and exacerbate immune responses triggered by additives.
- **Inflammation Panel:** Measures systemic inflammation markers, such as CRP, which are often elevated in individuals with sensitivities to food additives. It helps track the impact of additives on overall inflammatory health.
- **Organic Acids Test:** Provides insights into how food additives, especially those contributing to oxidative stress, may impact mitochondrial function, neurotransmitter balance, and metabolic processes.
- **Micronutrient Panel:** Measures essential nutrients needed to support detoxification and immune function, helping to identify deficiencies that may arise from exposure to harmful food additives and their impact on digestion.

The Vibrant Advantage

- **Detection of Response:** Detects immune responses to a variety of food additives, including artificial sweeteners, colors, and preservatives, which can contribute to symptoms like bloating, headaches, and fatigue.
- **Reactivity to Additives:** Analyzes your body's reactivity to additives commonly found in processed foods, helping providers identify the root cause of chronic digestive discomfort and inflammation.
- **Insight into Additives Issues:** Provides insights into which additives are causing issues, empowering individuals to make informed dietary decisions and reduce exposure to harmful chemicals in processed foods.



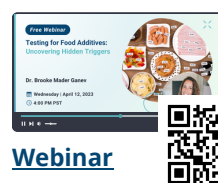
Additional Resources



**Markers
One-Sheet**



**Patient
One-Pager**



Webinar



Limitations

Please note the information provided by Vibrant Wellness is intended solely for research and informational purposes to help inform lifestyle choices aimed at potential risk mitigation. The information is not intended to be used by the patient for any diagnostic purpose and is not a substitute for medical advice by a healthcare practitioner. Please consult a licensed healthcare practitioner for any questions regarding diagnosis, prevention, or treatment of any disease or health assessment.

Regulatory Disclaimer

Please note the information provided by Vibrant Wellness is intended solely for research and informational purposes to help inform lifestyle choices aimed at potential risk mitigation. The tests were developed, and their performance characteristics were determined by Vibrant America and Vibrant Genomics. They have not been cleared or approved by US Food and Drug Administration. The laboratory is certified under the Clinical Laboratory Improvements Amendments (CLIA) as qualified to perform high complexity testing. The laboratory is also in compliance with College of American Pathologists (CAP) regulations and New York State Department of Health (NYSDOH) regulations.

KCM-25-032