

Salivary Hormones Panel

At Home

Saliva

Key Clinical Messages



What is the Salivary Hormones Panel?

The **Salivary Hormones Panel** measures 20 bioavailable hormone analytes in saliva, including cortisol, cortisone, estrogen, progesterone, testosterone, and DHEA-S at multiple times throughout the day, now featuring the **Cortisol Awakening Response (CAR)** for a more complete picture of adrenal function and stress adaptation.

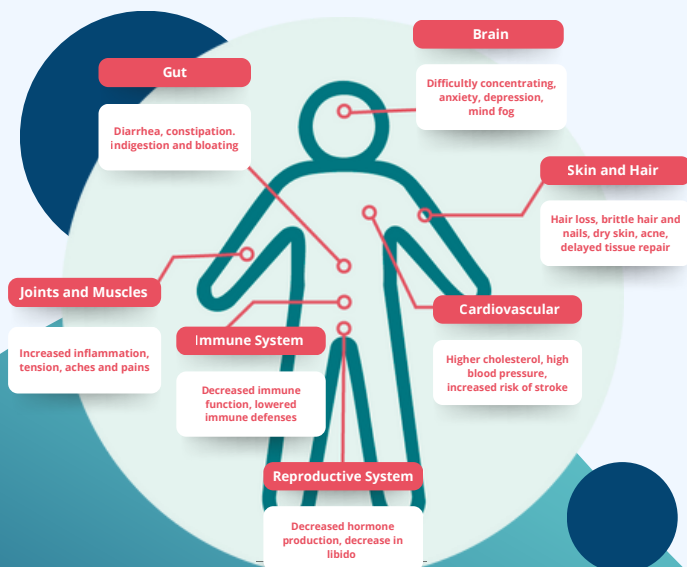
- Tracks hormone patterns and diurnal rhythms to assess adrenal health, reproductive balance, and hormone metabolism.
- Provides actionable insights for addressing stress, energy, mood, and long-term endocrine wellness.

Backed by clinical validation, this non-invasive panel delivers reliable results that help guide precise, personalized hormonal health strategies.



8 Reproductive & Steroid Hormones

14 Cortisol Awakening Response Markers



IMBALANCED HORMONES SYMPTOMS

Why Order?

The Salivary Hormones Panel is designed for patients with signs of adrenal or hormonal imbalance, such as fatigue, mood swings, anxiety, irregular cycles, hot flashes, low libido, weight changes, or skin and hair concerns. By tracking hormone patterns throughout the day, including the CAR, it reveals how your body adapts to stress, clears hormones, and maintains balance. These insights help providers develop personalized protocols to optimize hormone function, improve resilience, and address symptoms at their root.



[Download Sample Report](#)

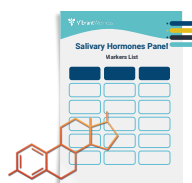
Synergistic Testing Options

- **Hormone Zoomer:** Expands on the Salivary Hormones Panel by measuring a broader spectrum of hormone-related markers, including adrenal and sex hormones and metabolites. This deeper analysis clarifies the full hormonal landscape, especially when paired with CAR data, and helps connect hormonal shifts to immune and metabolic function.
- **Gut Zoomer:** Analyzes 200+ microbial, inflammatory, digestive, and metabolic markers to uncover gut imbalances that directly influence hormone metabolism, detoxification, and reabsorption. Since the gut plays a critical role in estrogen clearance, stress regulation, and nutrient absorption for hormone synthesis, pairing it with the Salivary Hormones Panel provides a complete gut-hormone health picture.
- **Micronutrient Panel:** Measures essential vitamins, minerals, and antioxidants needed for hormone synthesis, metabolism, and clearance. Deficiencies in nutrients like magnesium, zinc, or B vitamins can impair hormone production, making this panel a valuable partner in restoring optimal hormone function.

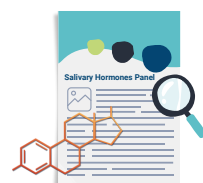
The Vibrant Advantage

- **Identifies Hidden Hormone Patterns:** Spot imbalances in hormones that regulate metabolism, energy, mood, stress, and reproductive health, with clear insight into real-life fluctuations and root causes.
- **Captures Real-Time Stress & Adrenal Response:** Six-point daily collection, including the full Cortisol Awakening Response (CAR), reveals how your body adapts to stress and daily demands, key for understanding fatigue, burnout, and resilience.
- **Personalized, Bioavailable Results:** Measures the hormones your body can actually use (not just what's circulating in blood), supporting more accurate diagnosis, early detection, and proactive care.
- **Gives Providers Custom Management Plan:** Enables providers to design customized treatment and wellness strategies that optimize hormone function, improve sleep, manage stress, and support your best well-being.

Additional Resources



[Markers One-Sheet](#)



[Patient One-Pager](#)



Limitations

Please note the information provided by Vibrant Wellness is intended solely for research and informational purposes to help inform lifestyle choices aimed at potential risk mitigation. The information is not intended to be used by the patient for any diagnostic purpose and is not a substitute for medical advice by a healthcare practitioner. Please consult a licensed healthcare practitioner for any questions regarding diagnosis, prevention, or treatment of any disease or health assessment.

The test is not available in NY State.

Regulatory Disclaimer

Please note the information provided by Vibrant Wellness is intended solely for research and informational purposes to help inform lifestyle choices aimed at potential risk mitigation. The tests were developed, and their performance characteristics were determined by Vibrant America and Vibrant Genomics. They have not been cleared or approved by US Food and Drug Administration. The laboratory is certified under the Clinical Laboratory Improvements Amendments (CLIA) as qualified to perform high complexity testing. The laboratory is also in compliance with College of American Pathologists (CAP) regulations and New York State Department of Health (NYSDOH) regulations.

KCM-25-046