

# UTI Zoomer

 At Home

 Urine

## Key Clinical Messages

### What is the UTI Zoomer?

The UTI Zoomer tests for a wide variety of pathogens, including bacterial, fungal, and viral agents associated with urinary tract infections (UTIs).

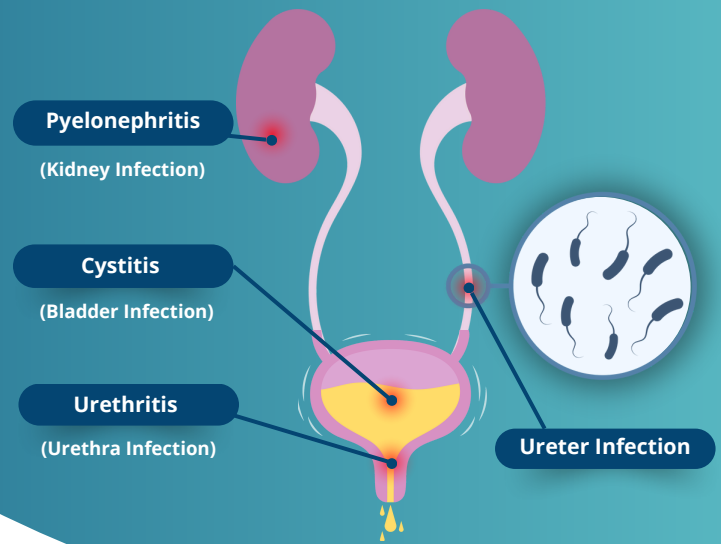
- Detects a broad spectrum of UTI-causing pathogens and antibiotic resistance genes while evaluating key urinalysis markers.
- This test helps identify potential infections early and supports targeted treatment strategies to improve urinary and overall health outcomes.

The UTI Zoomer goes beyond traditional UTI testing by providing a broader analysis of potential pathogens and their antibiotic resistance patterns.

**17** Urinalysis Markers

**22** UTI Pathogens

**9** Antibiotic Classes with Resistance Genes



### Why Order?

The UTI Zoomer is ideal for patients with recurrent UTIs, burning urination, abdominal discomfort, or persistent urinary urgency. It's especially useful for those with antibiotic-resistant infections, chronic symptoms without clear cause, or suspected fungal or bacterial involvement. Patients with a family history of urinary issues may also benefit from this comprehensive advanced testing tool.



[Download  
Sample Report](#)

## Synergistic Testing Options

- **Gut Zoomer:** Provides insights into gut health, including microbial imbalances that may contribute to urinary tract infections (UTIs). Gut dysbiosis and leaky gut can worsen UTI symptoms and make individuals more susceptible to recurring infections, complementing the UTI Zoomer by addressing gut-related issues.
- **Inflammation Panel:** Measures markers like CRP and ESR, which are often elevated in response to UTI infections. This test helps assess the level of systemic inflammation caused by chronic or recurrent UTIs, complementing the findings from the UTI Zoomer.
- **Micronutrient Panel:** Identifies nutrient deficiencies that can weaken the immune system and impair the body's ability to fight off infections, including UTIs. Addressing these deficiencies can help support immune function and reduce UTI recurrence.

## The Vibrant Advantage

- **Detects a Wide Range of UTI Pathogens:** Identifies a broad spectrum of urinary pathogens, including antibiotic-resistant bacteria, fungi, and viral infections, providing a more complete picture of urinary health.
- **Measures Immune Response to Infections:** Measures immune reactivity to various UTI-causing pathogens, allowing healthcare providers to target the root cause of symptoms like frequent urination, pelvic pain, and burning sensations.
- **Enables Fast, Targeted Treatment:** Early detection of UTI pathogens enables faster, more effective treatment, reducing the risk of recurrent infections and kidney damage.
- **Supports Personalized, Effective Care:** Provides personalized treatment plans based on pathogen-specific data, helping healthcare providers prescribe the right antibiotics or antifungals, reducing the risk of unnecessary treatments and antibiotic resistance.

## Additional Resources



### Limitations

Please note the information provided by Vibrant Wellness is intended solely for research and informational purposes to help inform lifestyle choices aimed at potential risk mitigation. The information is not intended to be used by the patient for any diagnostic purpose and is not a substitute for medical advice by a healthcare practitioner. Please consult a licensed healthcare practitioner for any questions regarding diagnosis, prevention, or treatment of any disease or health assessment.

### Regulatory Disclaimer

Please note the information provided by Vibrant Wellness is intended solely for research and informational purposes to help inform lifestyle choices aimed at potential risk mitigation. The tests were developed, and their performance characteristics were determined by Vibrant America and Vibrant Genomics. They have not been cleared or approved by US Food and Drug Administration. The laboratory is certified under the Clinical Laboratory Improvements Amendments (CLIA) as qualified to perform high complexity testing. The laboratory is also in compliance with College of American Pathologists (CAP) regulations and New York State Department of Health (NYSDOH) regulations.

KCM-25-024